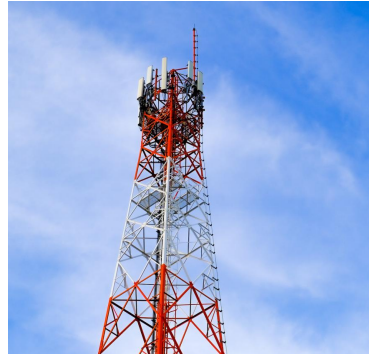


JUN JIANG

Engineers the world with Expertise and Hard Work

- Based in China Steel Tower Base, Hebei Province, near Beijing.
- Factory Area 66,000 m²
- 200+ sets of production machines
- Annual capacity of 50,000 tons
- 11 R&D experts.
- 200+ skilled workers



Product

Angular Steel Tower

Tubular Steel Tower

Type

3 legs / 4 legs

3 legs / 4 legs

Height

As request

Material

GB Q355B & Q235B or A36/A572 Gr50/S355JR

Quantity of platform

As per request

Antenna Type

GSM, RRU, CDMA, MW etc.

Design standard

GB / ANSI / TIA-222-G

Surface treatment

Hot dip galvanized/Painting/Spray

Galvanization standard

GB/T 13912-2002, EN ISO 1461, ASTM/A123

Color

As per request

Anti-seismic Grade

8

Fall Arrest System

Available if need

Nuts and Bolts

Gr 6.8 and 8.8

Service life

30/50 years

