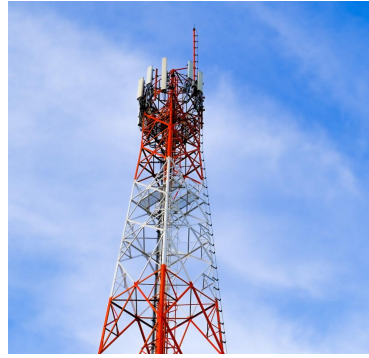


Engineers the world with Expertise and Hard Work

- Based in **China Steel Tower Base**, Hebei Province, near Beijing.
- Factory Area **66,000 m<sup>2</sup>**
- **200+** sets of production machines
- Annual capacity of **50,000 tons**
- **11 R&D experts.**
- **200+** skilled workers



Product	Angular Steel Tower	Tubular Steel Tower
Type	3 legs / 4 legs	3 legs / 4 legs
Height	As request	
Material	GB Q355B & Q235B or A36/A572 Gr50/S355JR	
Quantity of platform	As per request	
Antenna Type	GSM, RRU, CDMA, MW etc.	
Design standard	GB / ANSI / TIA-222-G	
Surface treatment	Hot dip galvanized/Painting/Spray	
Galvanization standard	GB/T 13912-2002, EN ISO 1461, ASTM/A123	
Color	As per request	
Anti-seismic Grade	8	
Fall Arrest System	Available if need	
Nuts and Bolts	Gr 6.8 and 8.8	
Service life	30/50 years	



Engineers the world with Expertise and Hard Work

- Based in **China Steel Tower Base**, Hebei Province, near Beijing.
- Factory Area **66,000 m<sup>2</sup>**
- **200+** sets of production machines
- Annual capacity of **50,000 tons**
- **11 R&D experts.**
- **200+** skilled workers



Product	Electrical Tower
Height	As request
Voltage	0.4-1000KV
Tower type	Self-supporting and 4 legged
Material	Q345B/A572,Q235B/A36
Earthquakeproof Grade	Grade 8
Ice wrapping	5-10 mm
Verticality	1 / 1000

Welding Standard	AWS D1.1, AS554, AS 4100 standard or equivalent
Working Temperature	- 45° C --+ 45° C
Anti-corrosion	Hot Dip Galvanization
Galvanization standard	GB/T 13912-2002, EN ISO 1461,ASTM/A123 or equivalent
Nuts& Bolts	Grade 8.8 refer to GB/T 5780, GB/T 5782
Spare parts	Additional tower and bolt spare parts will be sent
Working life span	30/50 years



# Trail Assembly

All finished parts need to be checked

For each order, we will do trail assembly before mass production to avoid any quality flaw.



## | Rooftop Telecom Tower Features



---

To Be Reliable

## Surface Treatment

As Per Request

## Hot-dip Galvanization

ASTM/A123

GB/T 13912-2002

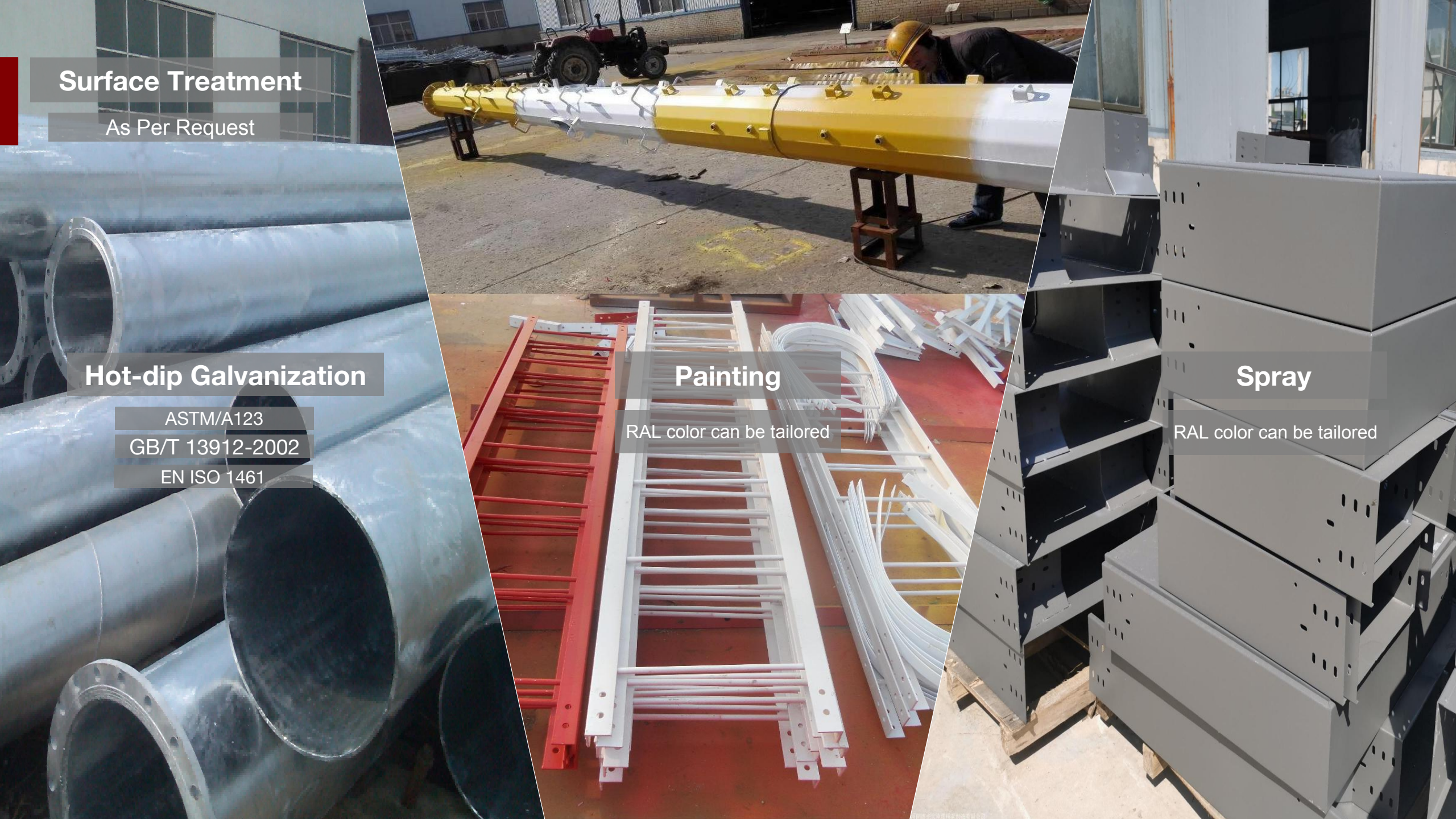
EN ISO 1461

## Painting

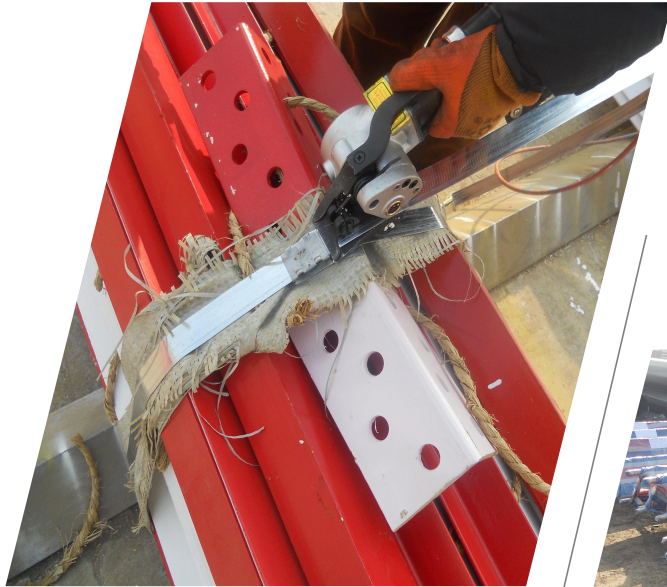
RAL color can be tailored

## Spray

RAL color can be tailored



# Packing



Steel Stripe

For Fastening

Oil Platstic

For Waterproof &  
Moisture-proof

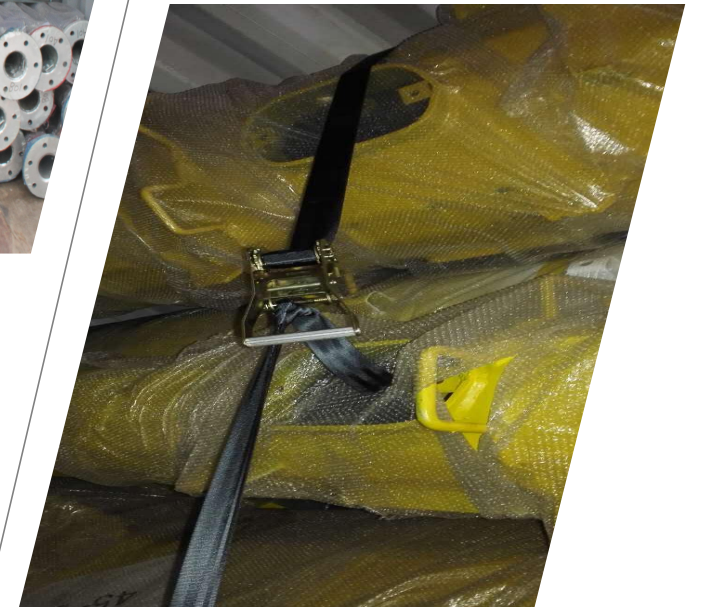


Steel Bar

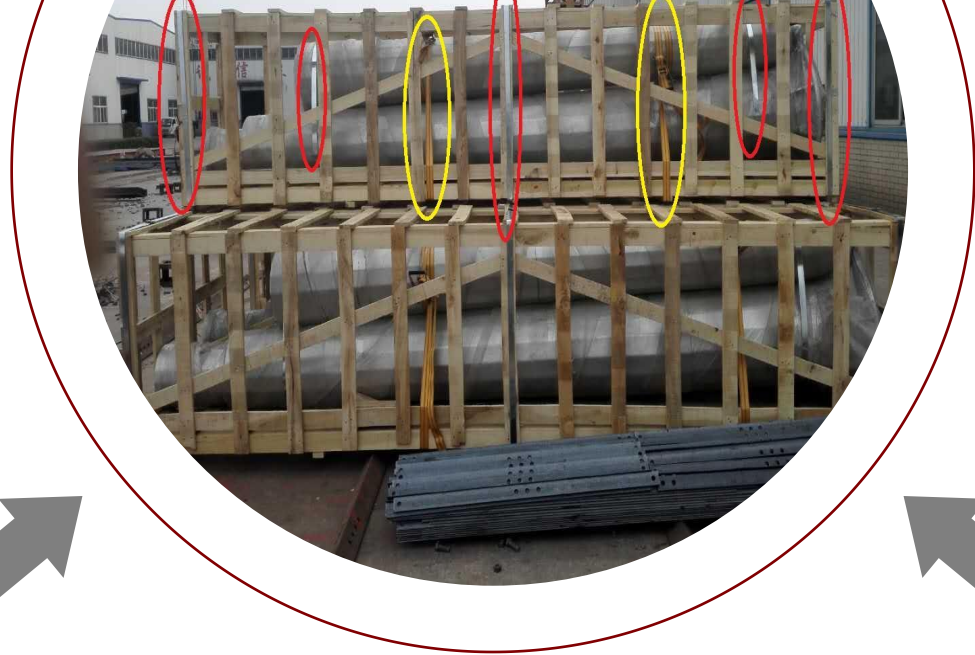
To Fix the Goods

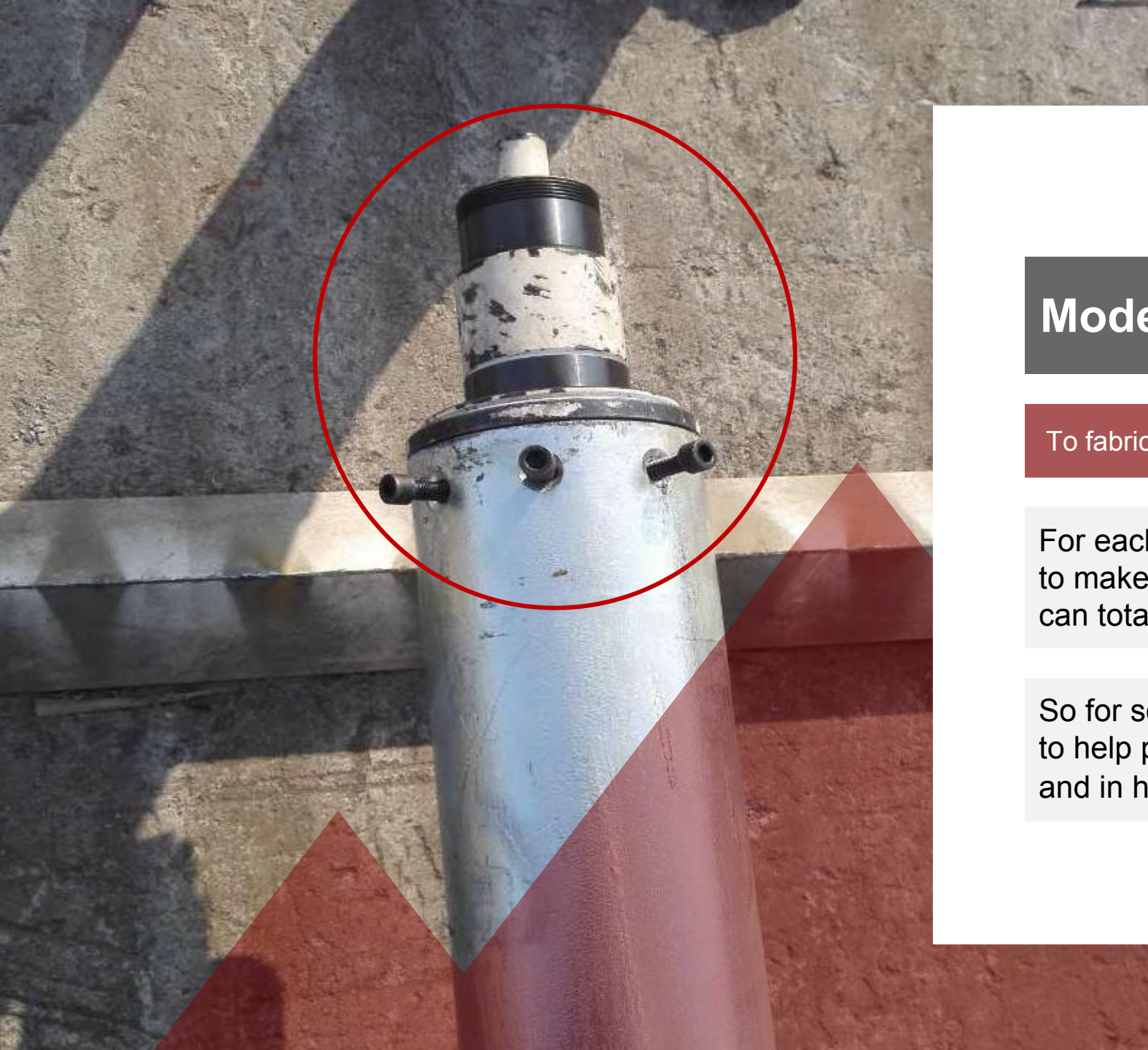
Binding Strap

For Strengthening



# Customized Packing





## Model ( Turbine base )

To fabricate the product more accurately

For each order, we will do as much we can to make sure that the product we produce can totally function well.

So for some projects, we will make a model to help process the parts more accurately and in high efficiency