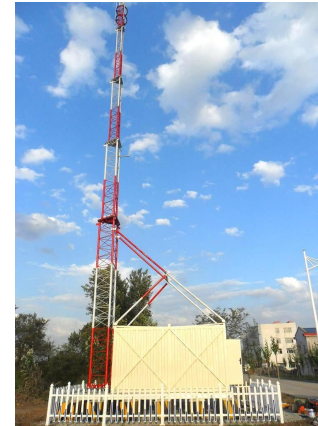


- Based in **China Steel Tower Base**, Hebei Province, near Beijing.
- Factory Area **66,000 m²**
- **200+** sets of production machines
- Annual capacity of **50,000 tons**
- **11 R&D experts.**
- **200+** skilled workers



Product	BTS
Height	30 m or as request
Quantity of platform	2
Quantity of antennas	3 sets for each platform, 6 in total
Connection type	Flange/bolt
Quantity of bracket	6
Specs and length of bracket	See design
Outside of the machine room	Building reflective insulation coating
Roof and wall	PU with excellent thermal insulation, strength, and stability (density greater than 30kg per cubic meter);
Core material	Fireproof core material
Keel	Steel keel

Trail Assembly

All finished parts need to be checked

For each order, we will do trail assembly before mass production to avoid any quality flaw.



| Rooftop Telecom Tower Features



To Be Reliable

Surface Treatment

As Per Request

Hot-dip Galvanization

ASTM/A123

GB/T 13912-2002

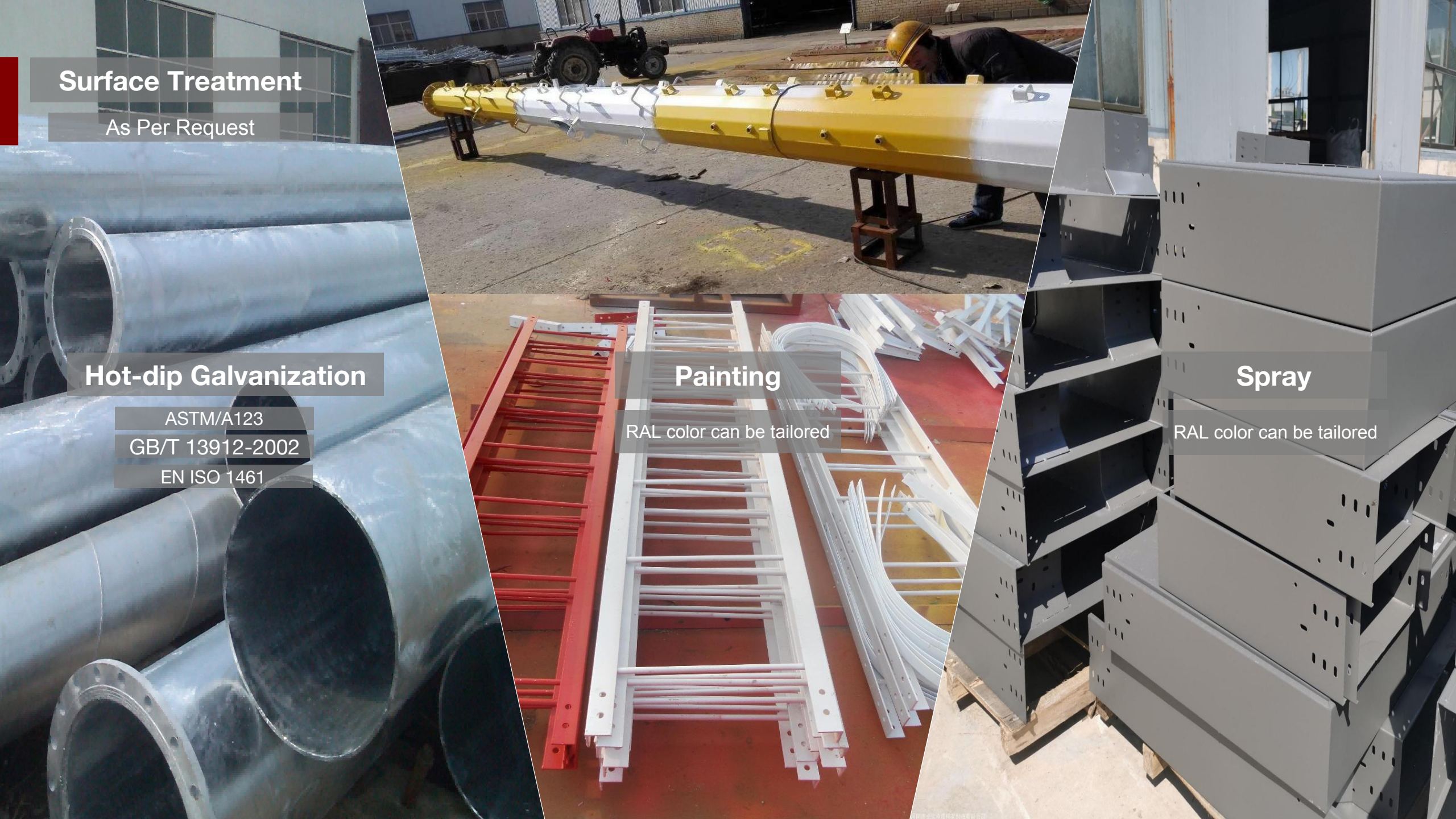
EN ISO 1461

Painting

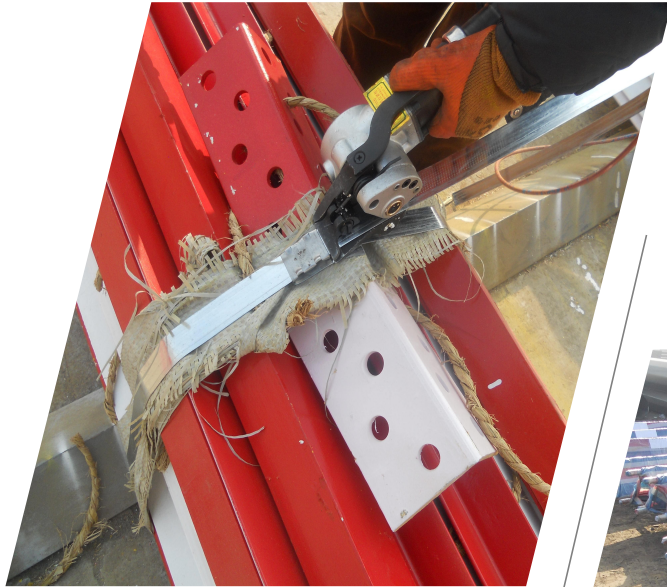
RAL color can be tailored

Spray

RAL color can be tailored



Packing



Steel Stripe

For Fastening

Oil Platstic

For Waterproof &
Moisture-proof

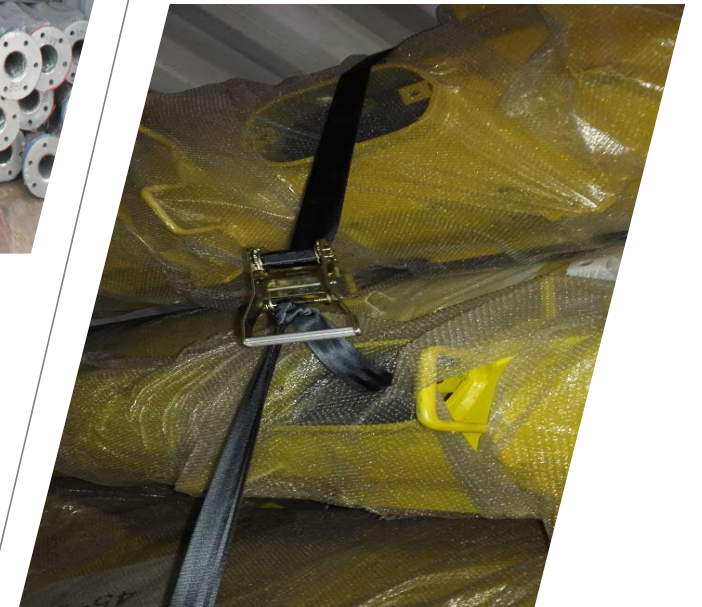


Steel Bar

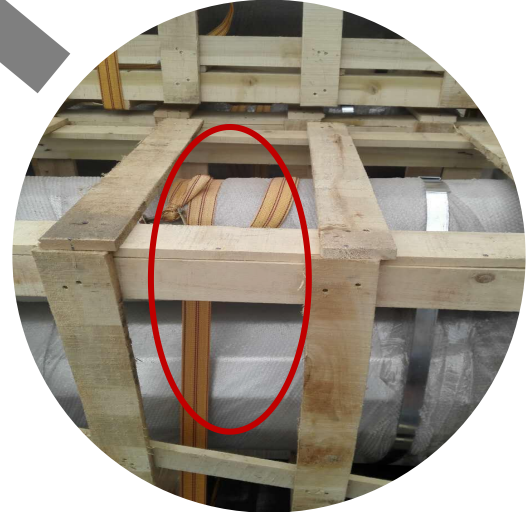
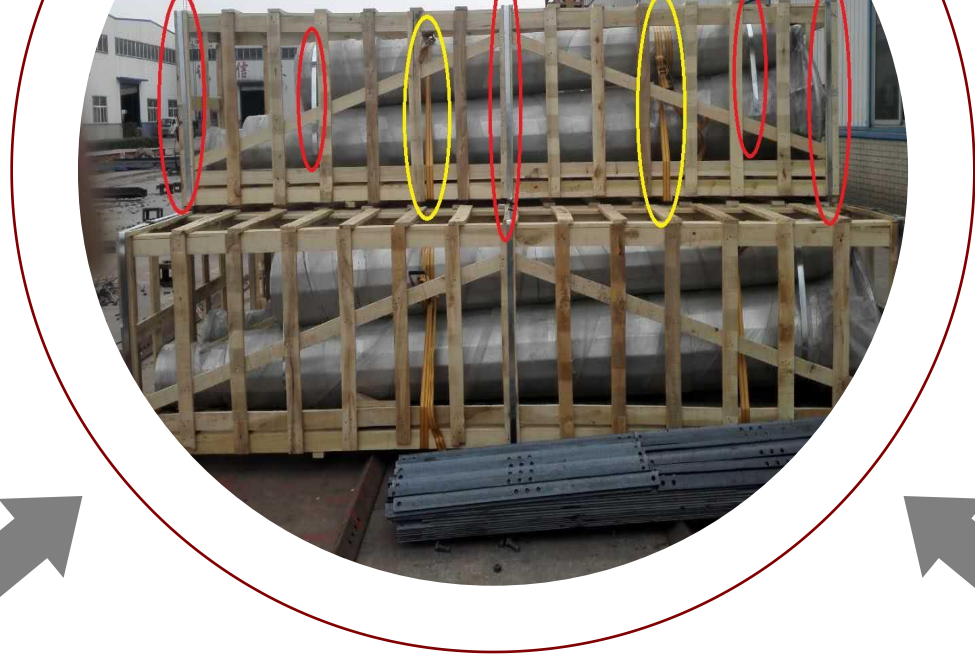
To Fix the Goods

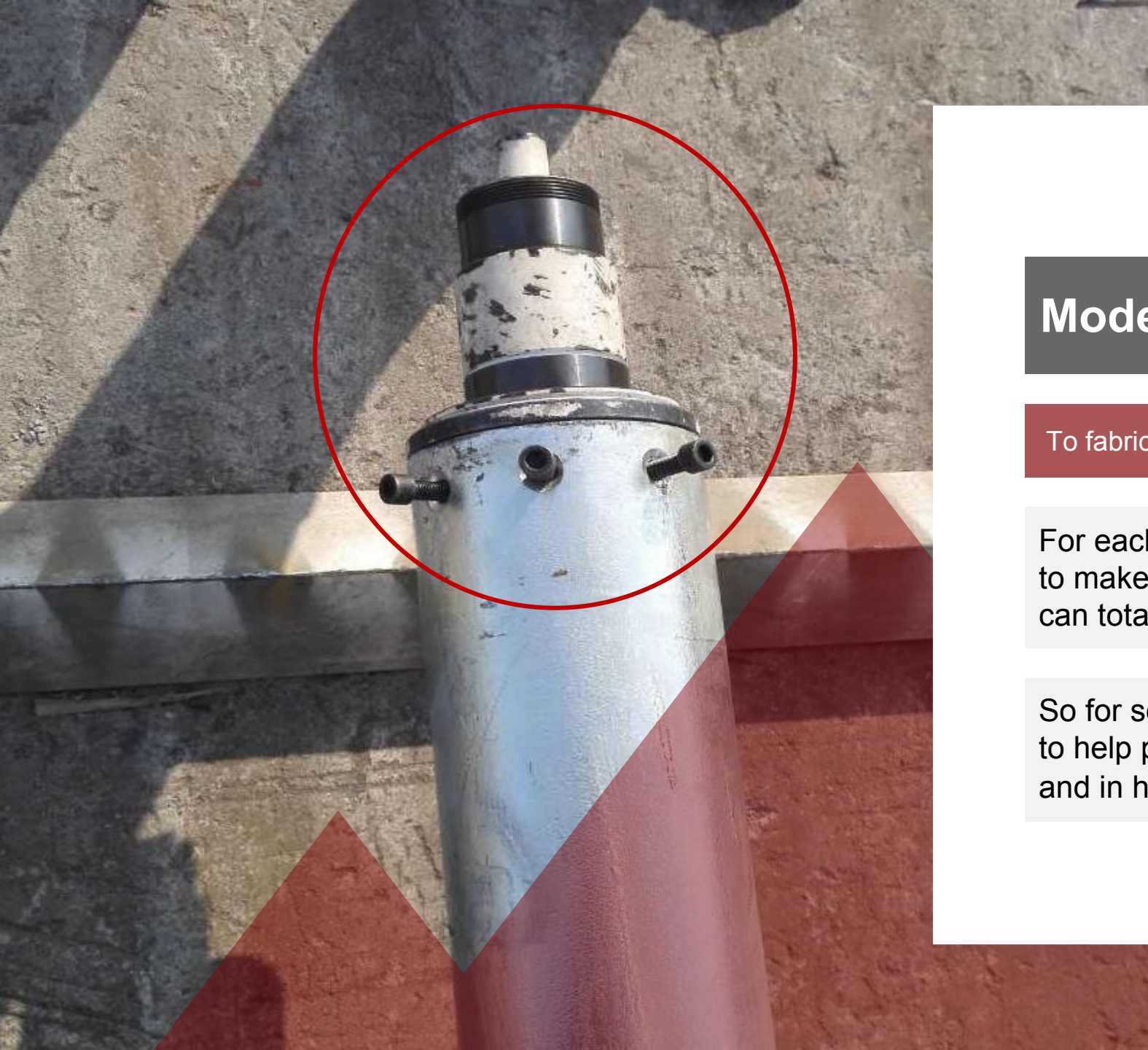
Binding Strap

For Strengthening



Customized Packing





Model (Turbine base)

To fabricate the product more accurately

For each order, we will do as much we can to make sure that the product we produce can totally function well.

So for some projects, we will make a model to help process the parts more accurately and in high efficiency