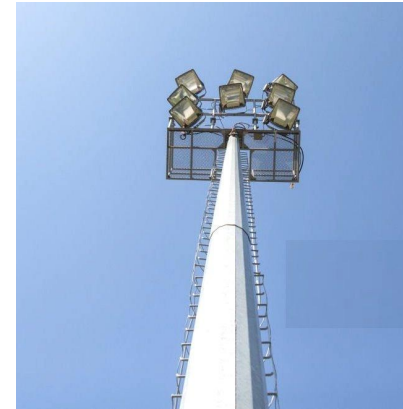


Engineers the world with Expertise and Hard Work

- Based in **China Steel Tower Base**, Hebei Province, near Beijing.
- Factory Area **66,000 m²**
- **200+** sets of production machines
- Annual capacity of **50,000 tons**
- **11 R&D experts.**
- **200+** skilled workers



Product	Lamp Pole
Height	As per request
Type	Monopole or lattice
Material	Q235,Q355 or equivalent
Shape	Conical or Polygonal
Mounting Bracket	As designed based on the loading
Arm type	Single/double/bracket
Thickness of the monopole	20-60mm
Surface treatment	Hot Dip Galvanization (ASTM 123)or painting

Trail Assembly

All finished parts need to be checked

For each order, we will do trail assembly before mass production to avoid any quality flaw.



| Rooftop Telecom Tower Features



To Be Reliable

Surface Treatment

As Per Request

Hot-dip Galvanization

ASTM/A123

GB/T 13912-2002

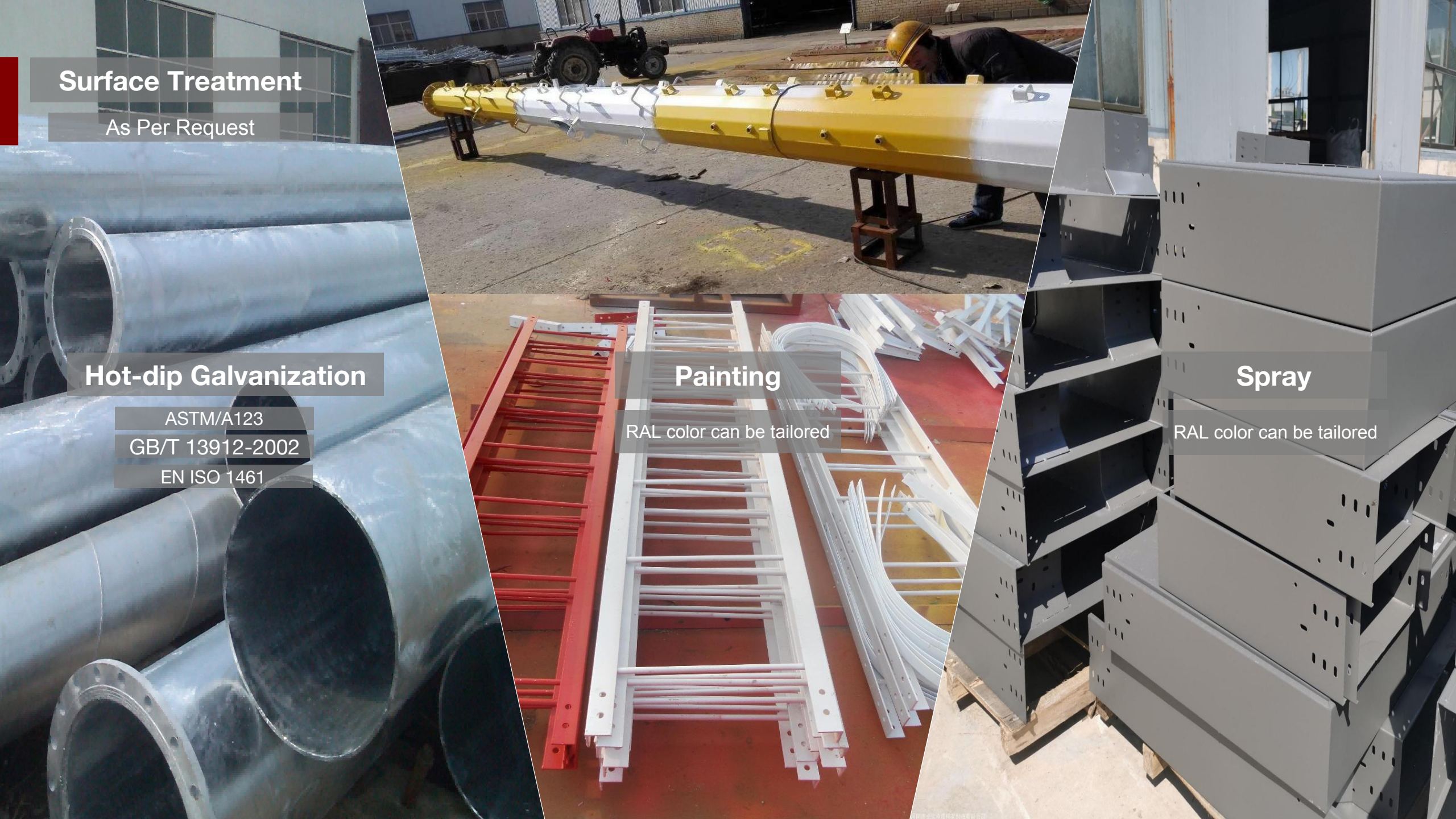
EN ISO 1461

Painting

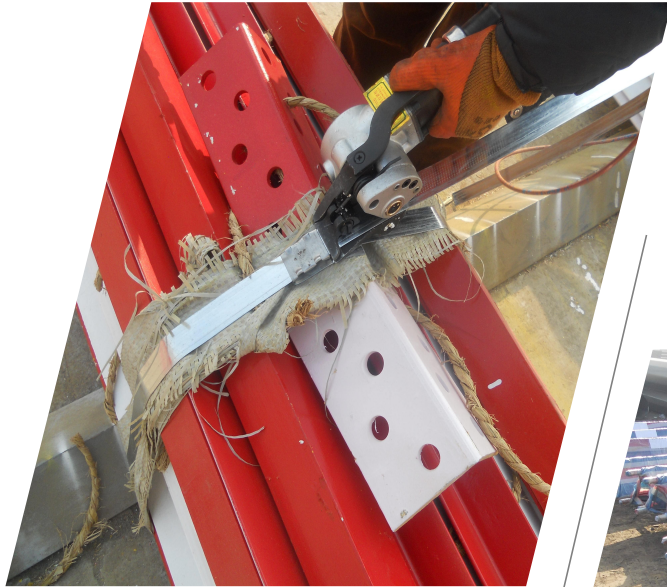
RAL color can be tailored

Spray

RAL color can be tailored



Packing



Steel Stripe

For Fastening

Oil Platstic

For Waterproof &
Moisture-proof

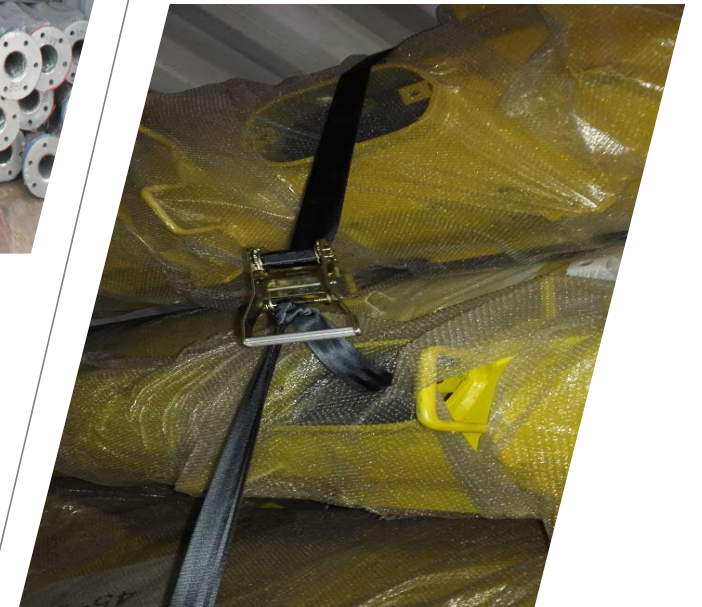


Steel Bar

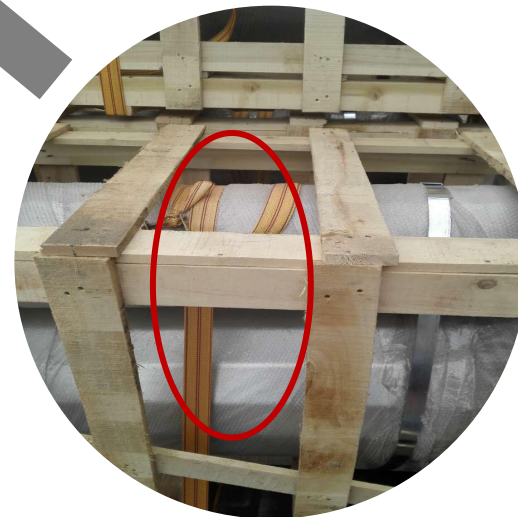
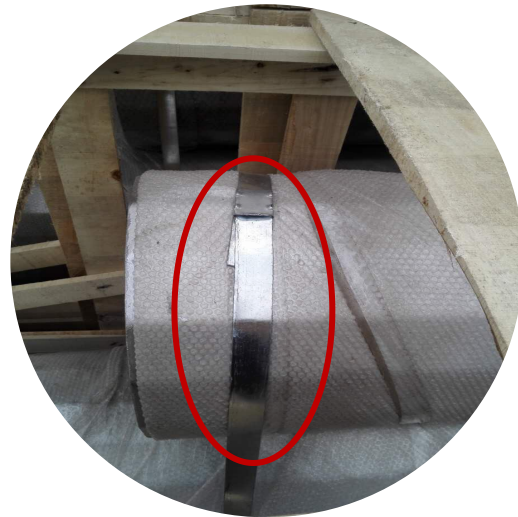
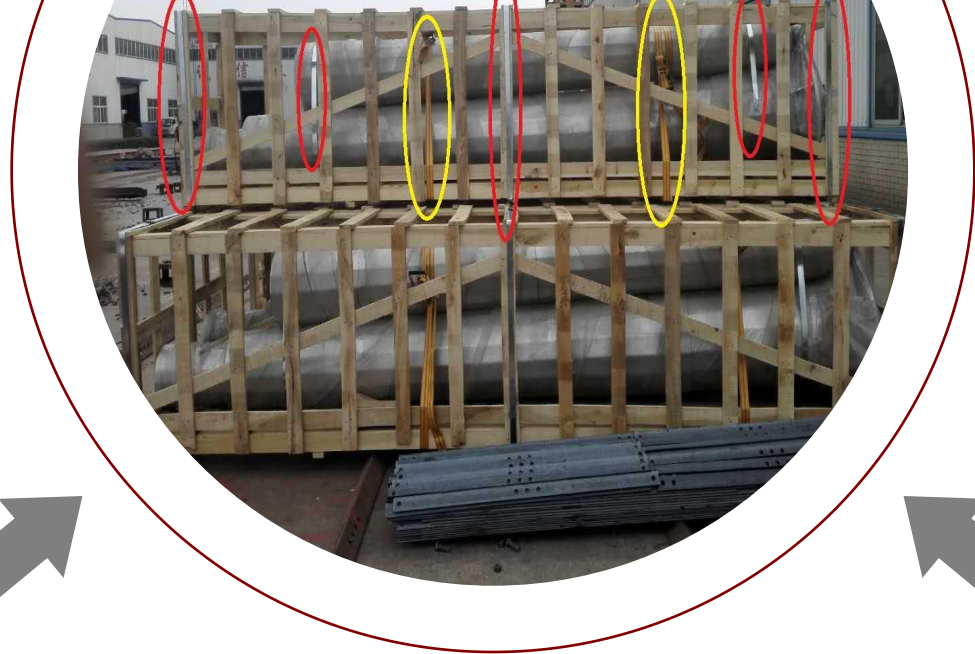
To Fix the Goods

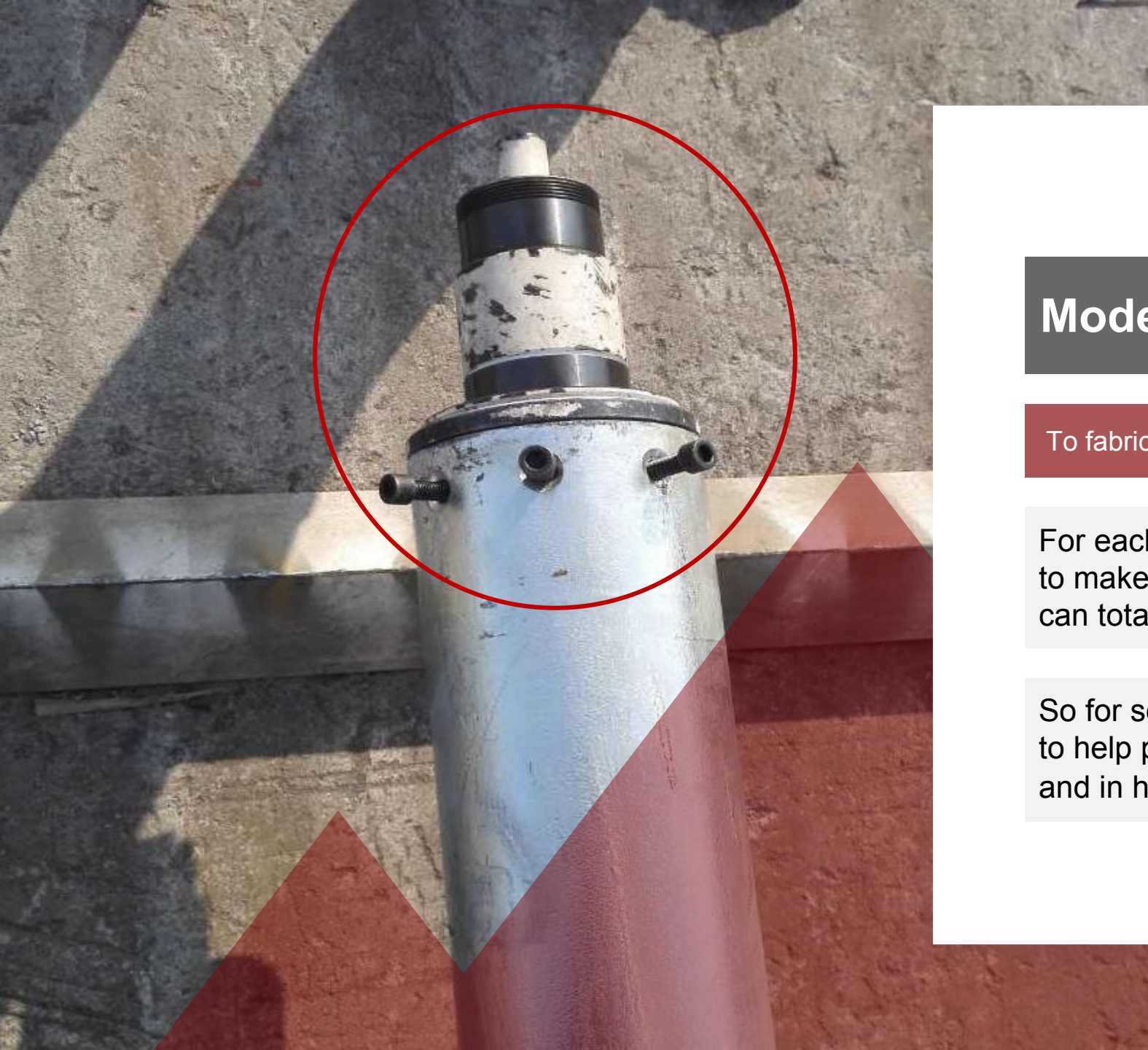
Binding Strap

For Strengthening



Customized Packing





Model (Turbine base)

To fabricate the product more accurately

For each order, we will do as much we can to make sure that the product we produce can totally function well.

So for some projects, we will make a model to help process the parts more accurately and in high efficiency