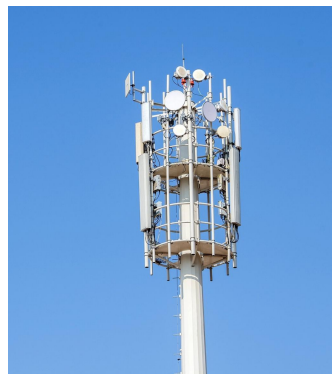


Engineers the world with Expertise and Hard Work

- Based in **China Steel Tower Base**, Hebei Province, near Beijing.
- Factory Area **66,000 m²**
- **200+** sets of production machines
- Annual capacity of **50,000 tons**
- **11 R&D experts.**
- **200+** skilled workers



<https://www.junjiangtower.com/>

Product	Monopole Tower
Height	As per request
Shape	Polygonal (6-18 sides)
Material	Q355B & Q235B or A36/A572 Gr50/S355JR
Design Standard	GB / ANSI / TIA-222-G
Thickness	5-30mm
Basic Wind speed	180km/h_3 second gust or as per design
Foundation Type	Independent Foundation / Raft Foundation / Pile Foundation
Antenna Type	GSM, RRU, CDMA, MW etc.
Connection of sections	Overlap / Flange connection
Welding Standard	AWSD1.1
Surface treatment	Hot dip galvanized/Painting/Spray
Anti-seismic Grade	8
Color	As per request
Nuts and Bolts	Gr 6.8 and 8.8
Service life	30/50 years

Trail Assembly

All finished parts need to be checked

For each order, we will do trail assembly before mass production to avoid any quality flaw.



Rooftop Telecom Tower Features



To Be Reliable

Surface Treatment

As Per Request

Hot-dip Galvanization

ASTM/A123

GB/T 13912-2002

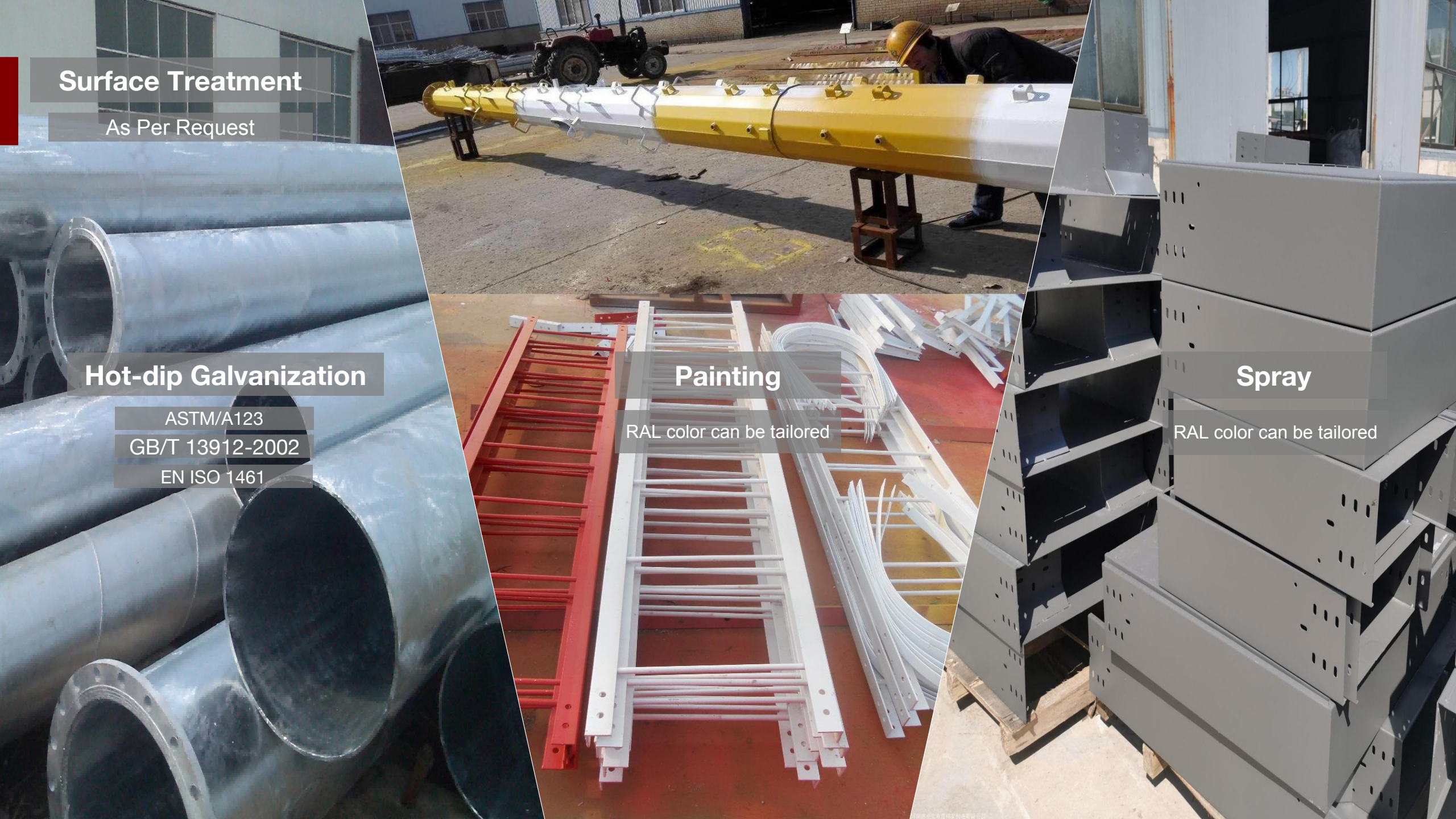
EN ISO 1461

Painting

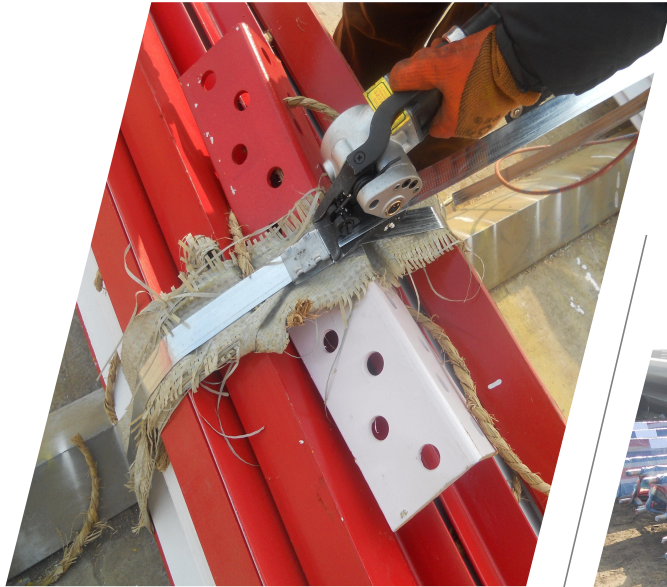
RAL color can be tailored

Spray

RAL color can be tailored



Packing



Steel Stripe

For Fastening

Oil Platstic

For Waterproof &
Moisture-proof

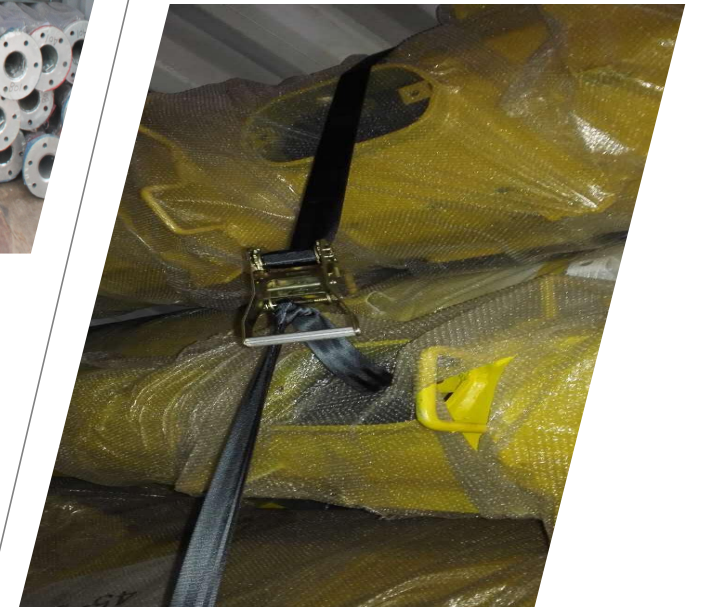


Steel Bar

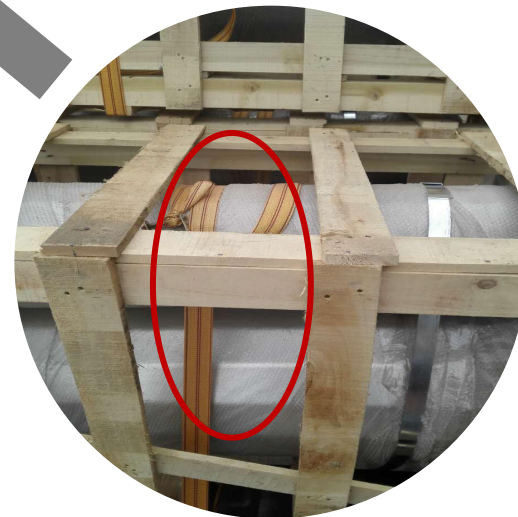
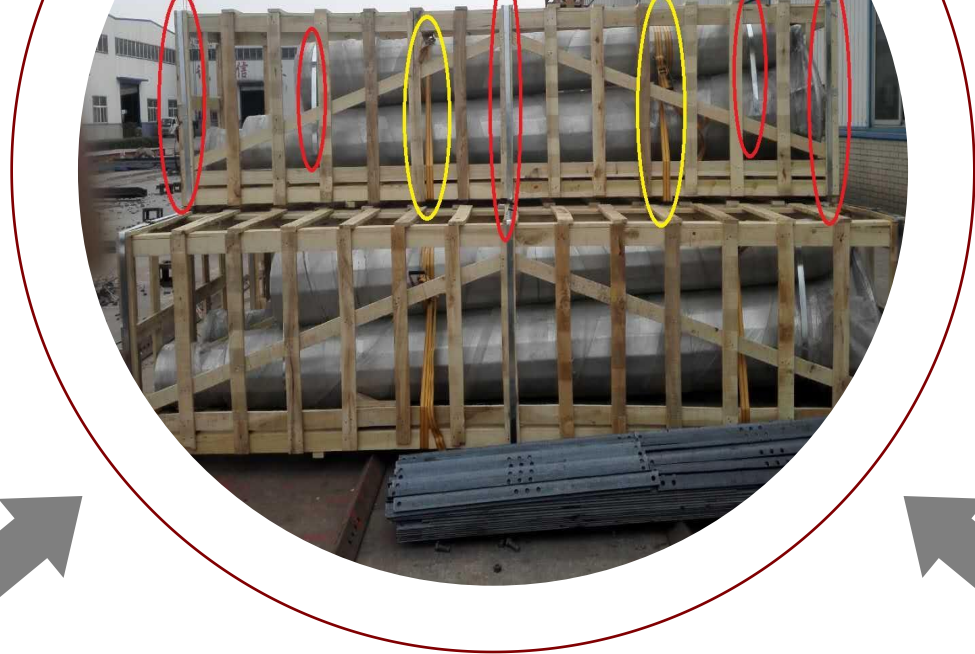
To Fix the Goods

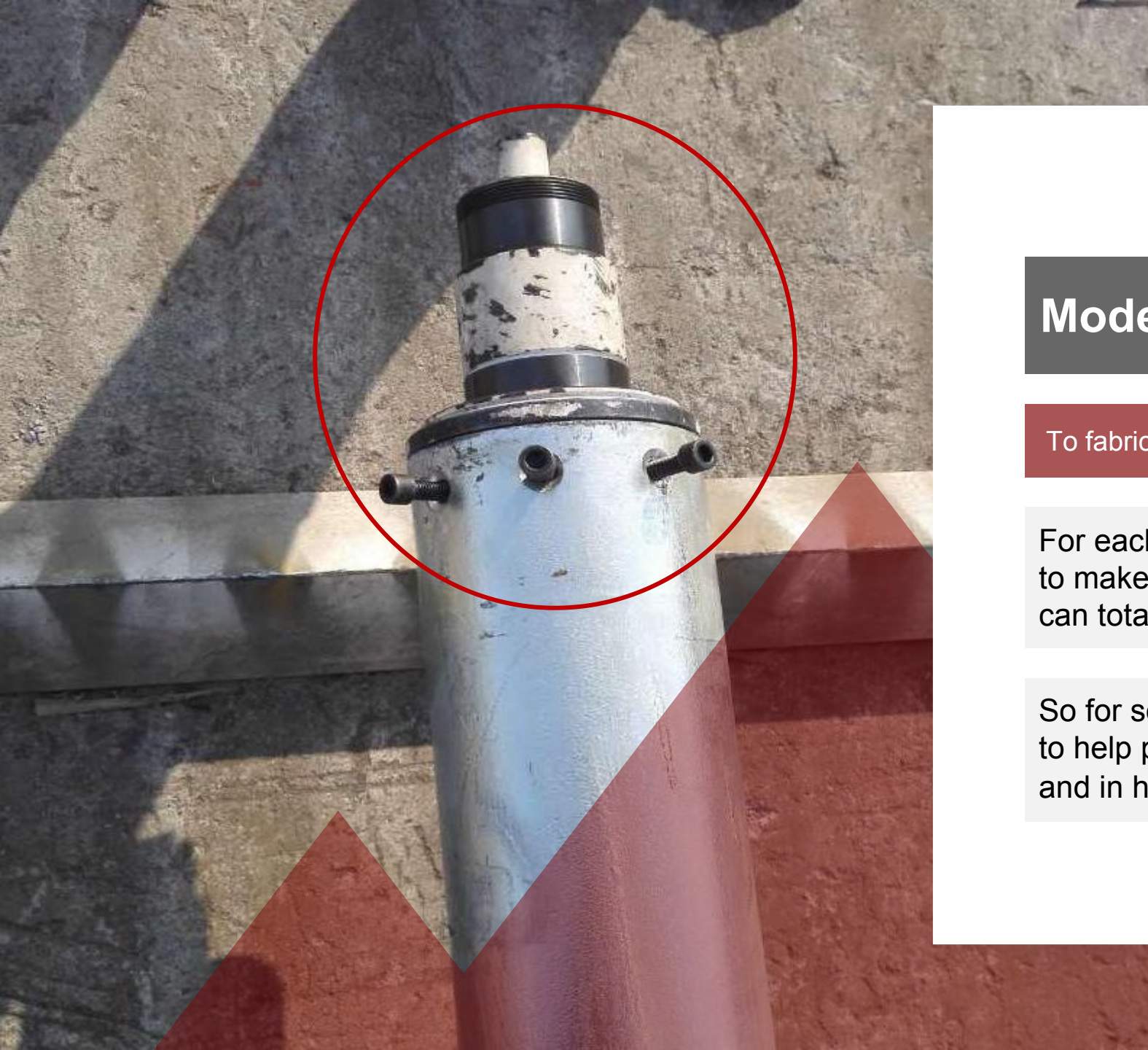
Binding Strap

For Strengthening



Customized Packing





Model (Turbine base)

To fabricate the product more accurately

For each order, we will do as much we can to make sure that the product we produce can totally function well.

So for some projects, we will make a model to help process the parts more accurately and in high efficiency