

Engineers the world with Expertise and Hard Work

- Based in **China Steel Tower Base**, Hebei Province, near Beijing.
- Factory Area **66,000 m<sup>2</sup>**
- **200+** sets of production machines
- Annual capacity of **50,000 tons**
- **11 R&D experts.**
- **200+** skilled workers



Product	Power Substation Structure
Voltage	0.4-1000KV
Shape	Round / polygonal / Conical / Tubular
Wind speed	0~180km/h (American standard 3s gust)
Foundation type	Independent foundation/Raft foundation/Pile foundation
Soil condition	Soft ground/Mountain groud
Type	Single pole/ Double pole/ Angle steel
Connection type	Flange/ Bolt
Material	Hot roll steel Q235, Q345, Q420, Q460, Gr.50, Gr.65, SS400, or equivalent
Surface treatment	Hot Dip Galvanization(GB/T 13912-2002, EN ISO 1461,ASTM/A123)



# Trail Assembly

All finished parts need to be checked

For each order, we will do trail assembly before mass production to avoid any quality flaw.



## | Rooftop Telecom Tower Features



---

To Be Reliable

## Surface Treatment

As Per Request

## Hot-dip Galvanization

ASTM/A123

GB/T 13912-2002

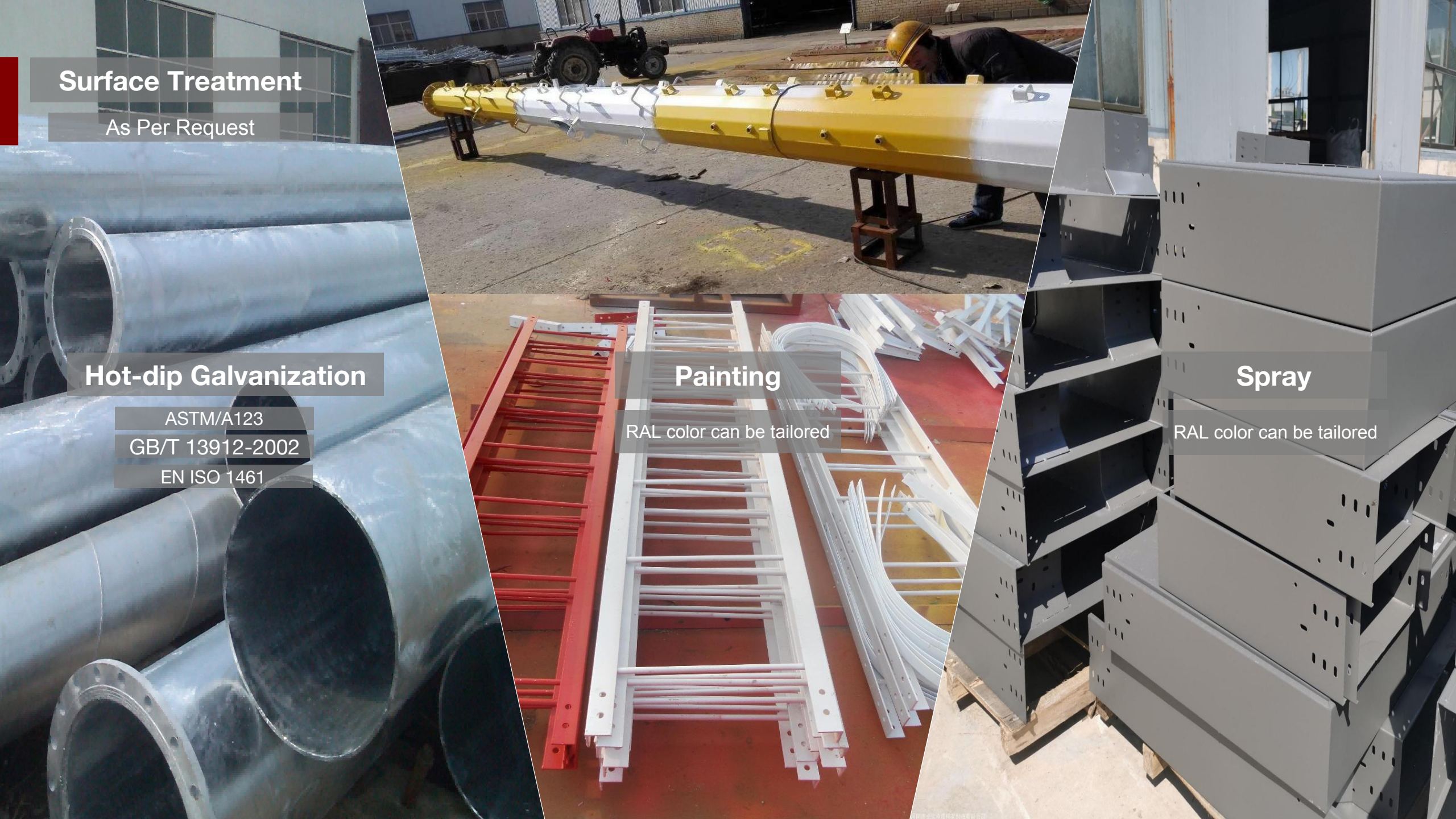
EN ISO 1461

## Painting

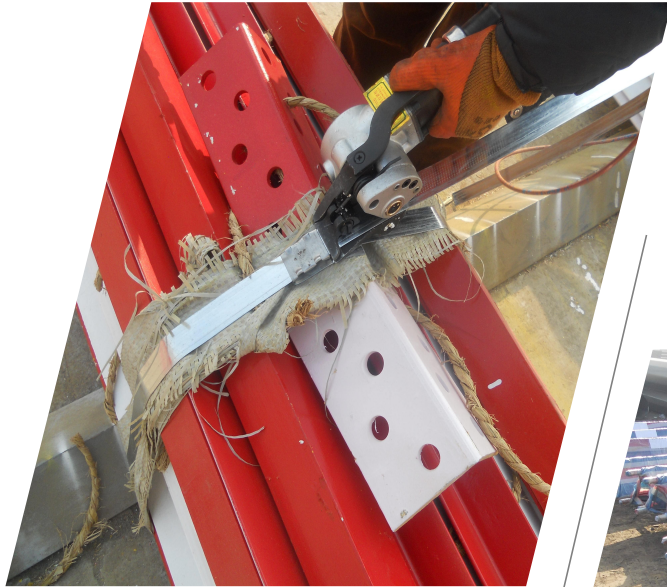
RAL color can be tailored

## Spray

RAL color can be tailored



# Packing



Steel Stripe

For Fastening

Oil Platstic

For Waterproof &  
Moisture-proof

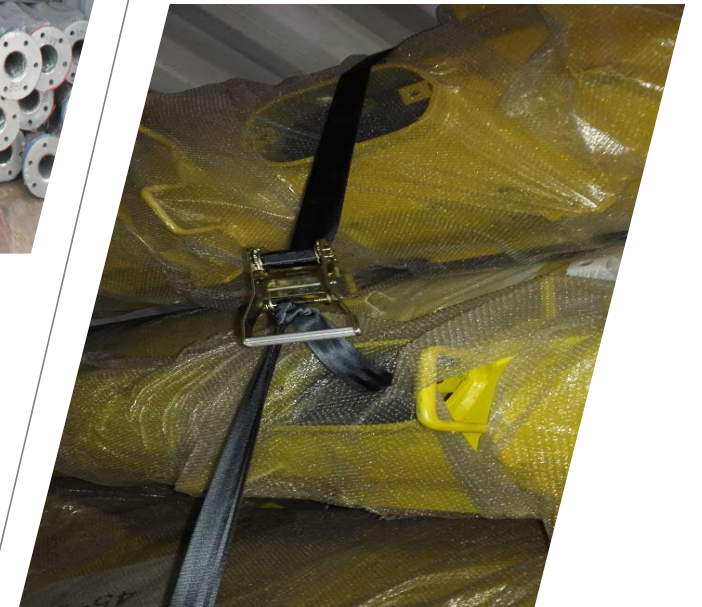


Steel Bar

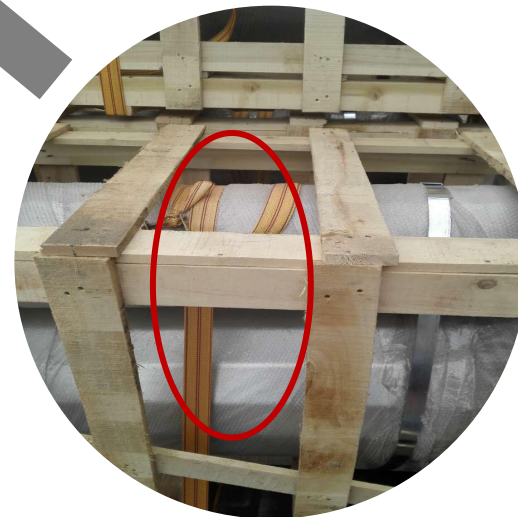
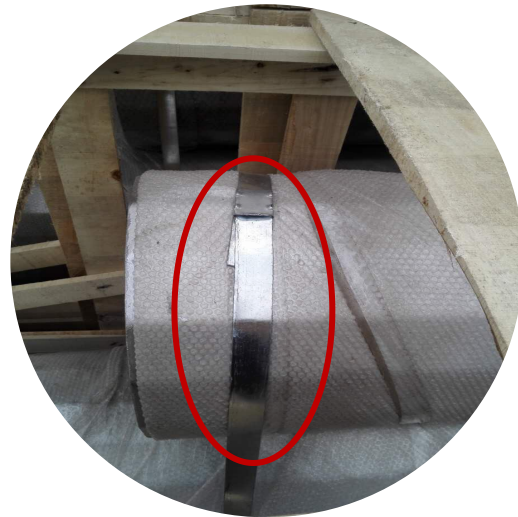
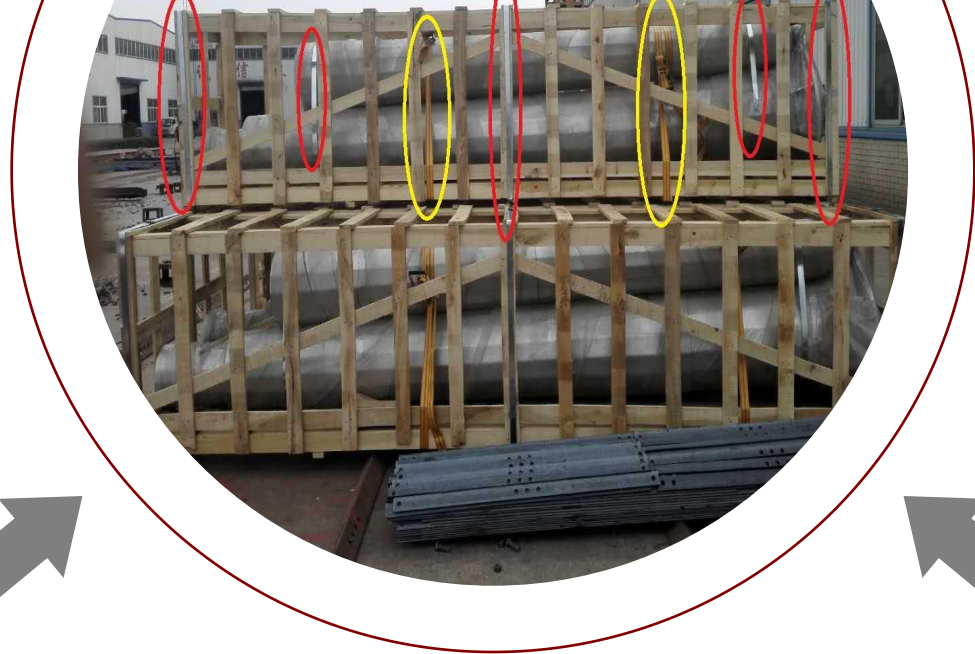
To Fix the Goods

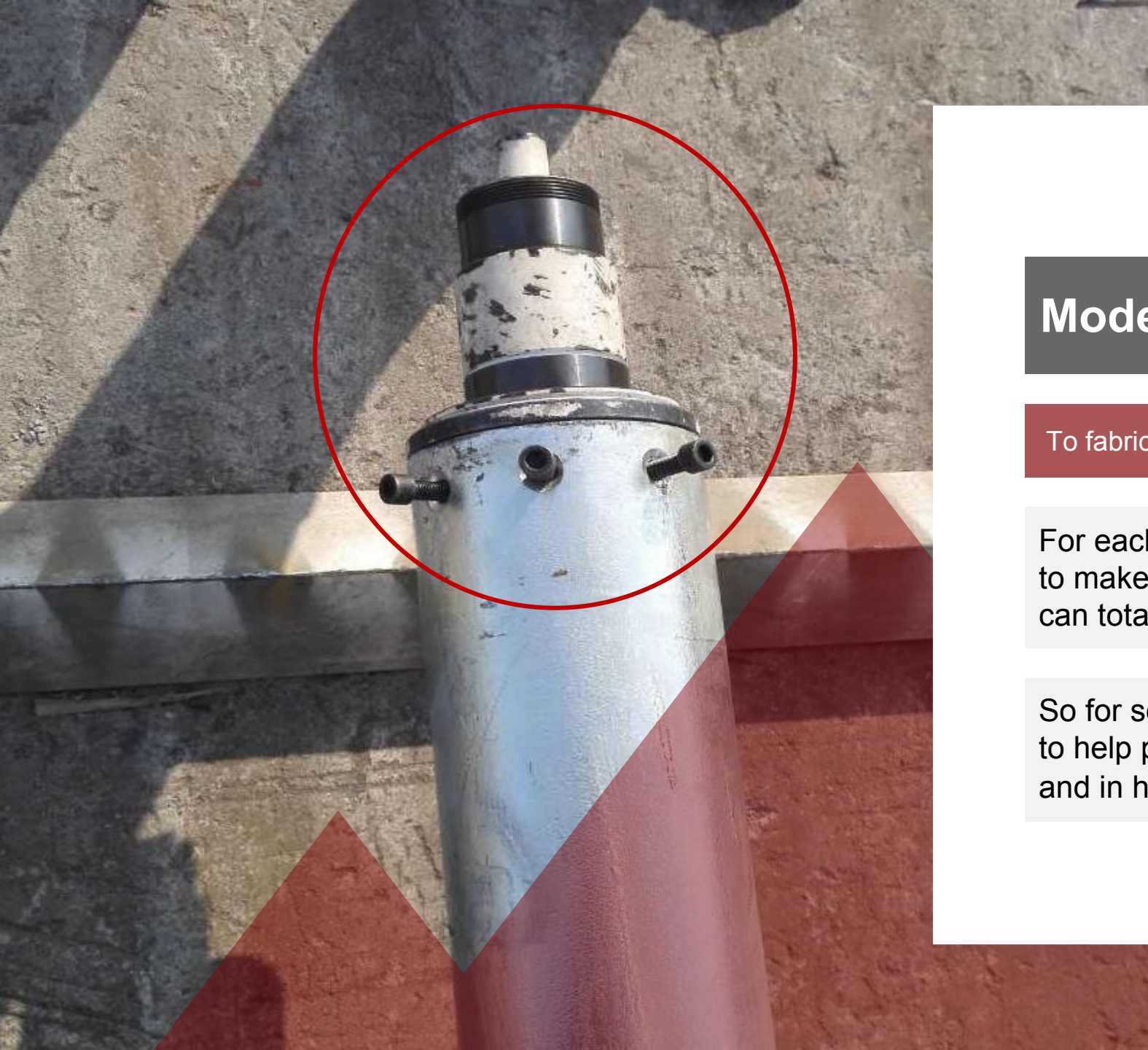
Binding Strap

For Strengthening



# Customized Packing





## Model ( Turbine base )

To fabricate the product more accurately

For each order, we will do as much we can to make sure that the product we produce can totally function well.

So for some projects, we will make a model to help process the parts more accurately and in high efficiency